



A product by



[www.acemica.com](http://www.acemica.com)



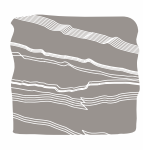
शवा mm  
1.25MM



## What's Inside?



BARK



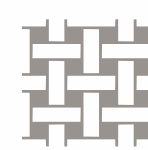
SLATE



BOXES



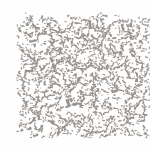
PIXEL



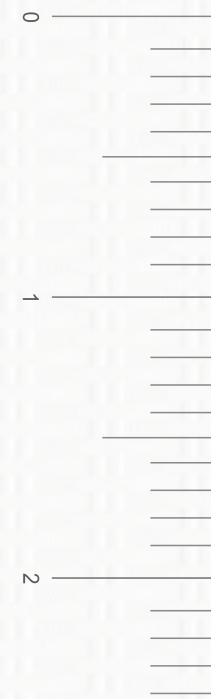
WEAVE



MOSAIC



RUSTIC



1.25MM

सवा mm

### Why Thickness Matters

#### Thicker means tougher

These laminates handle moisture, wear, and impact with ease.

#### Better Dimensional Stability

They reduce the chances of warping, bubbling, or delamination over time.

#### Enhanced Surface Realism

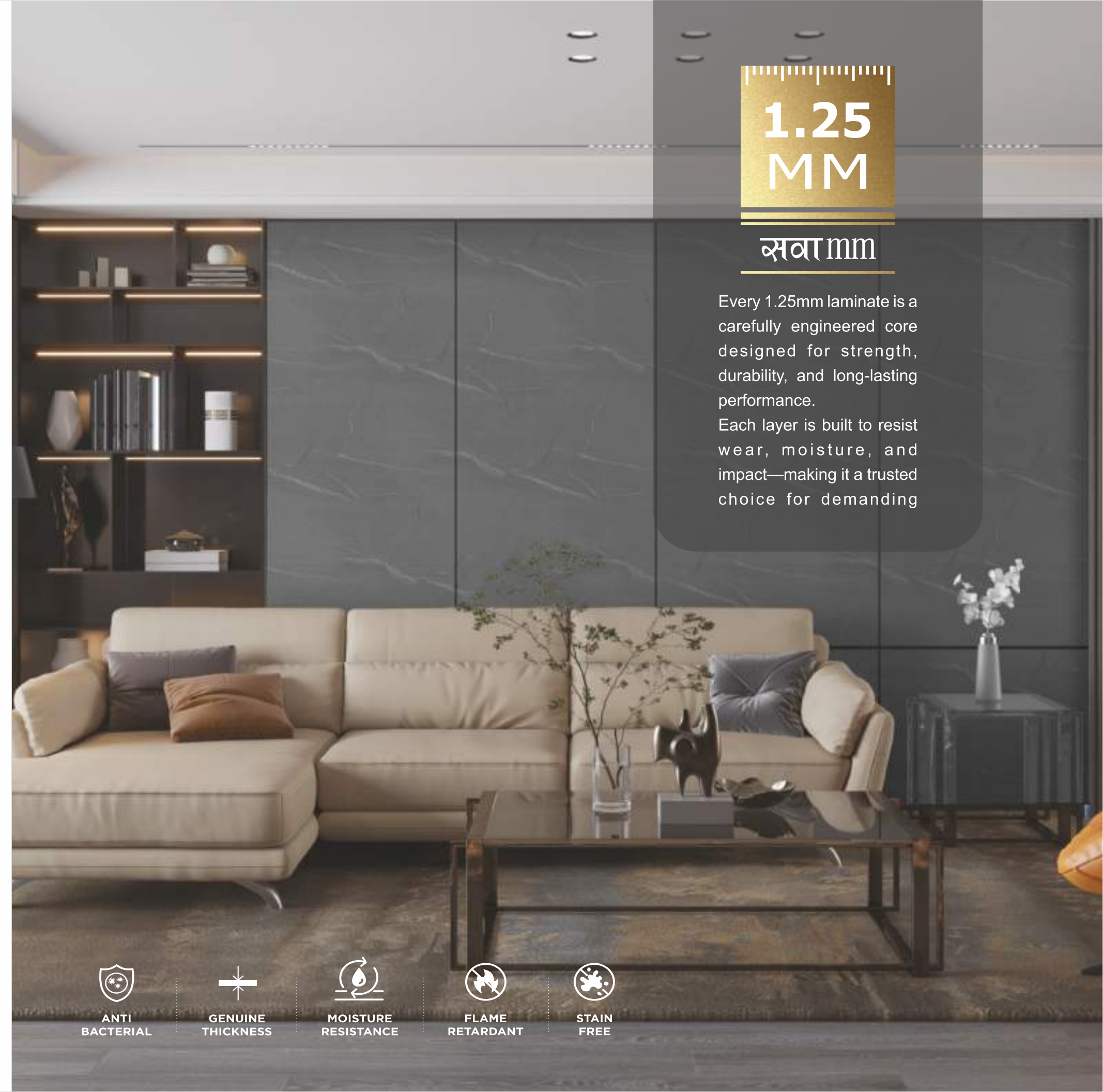
Thicker laminates allow for deeper textures and embossing.

1.25  
MM

सवा mm

Every 1.25mm laminate is a carefully engineered core designed for strength, durability, and long-lasting performance.

Each layer is built to resist wear, moisture, and impact—making it a trusted choice for demanding



ANTI  
BACTERIAL



GENUINE  
THICKNESS



MOISTURE  
RESISTANCE



FLAME  
RETARDANT



STAIN  
FREE

# BARK



Thick. Tough. Trusted

सवा mm

1.25 MM



4702 A-200  
BEIGE MIST



4163 A-190  
COAL BLACK



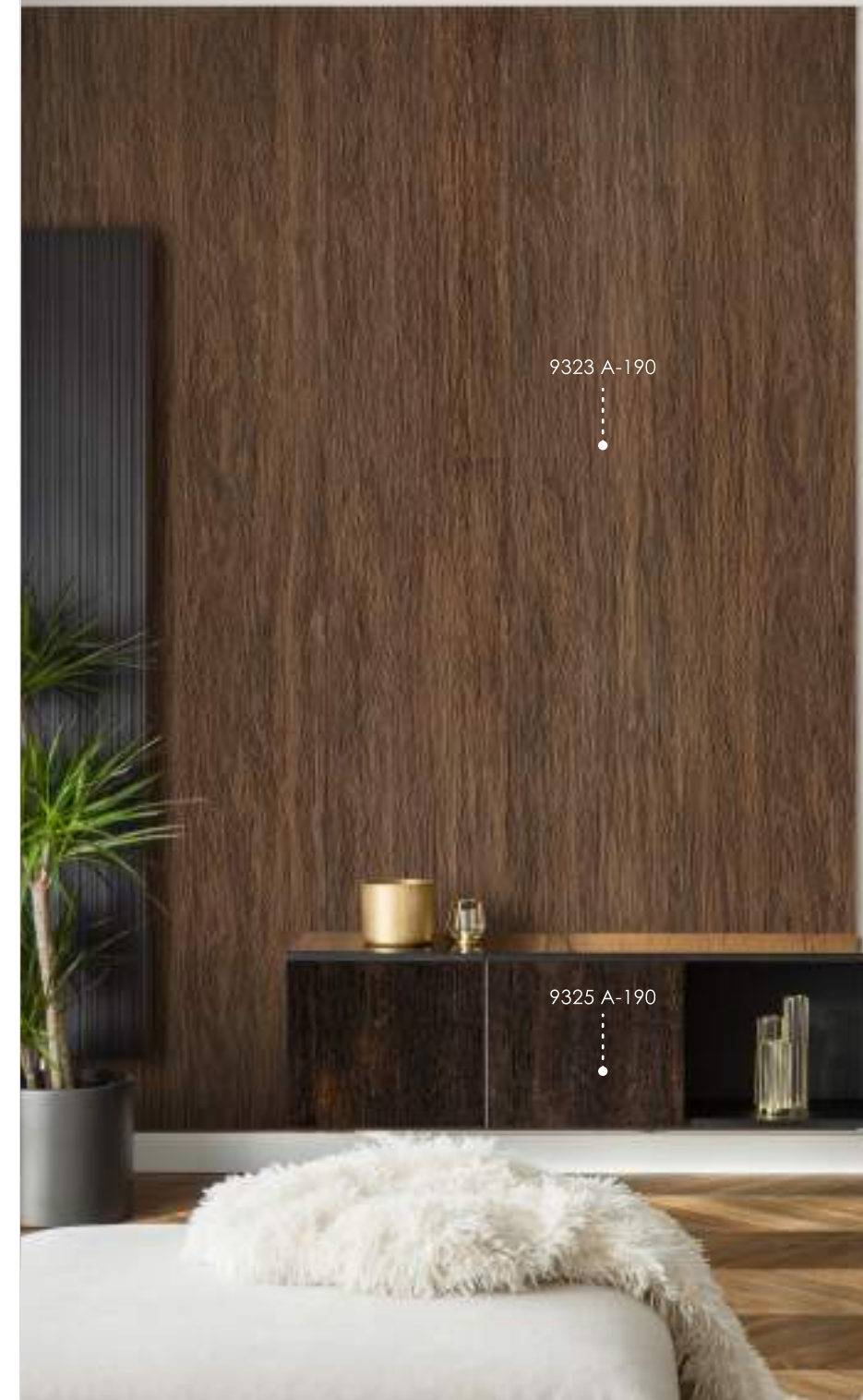
4051 A-190  
BLACK

# BARK

1.25 MM



9325 A-190  
METALLIC ODER PEAR WOOD



Built. Balanced. Bold.

सवा mm



9323 A-190  
MAGIC SPARKLING WOOD

# SLATE

1.25 MM

सवा mm



8114 A-200  
EARTH WHITE

Feel the Forest. Live the Strength.



8090 A-200  
NUTMEG



4145 A-200  
PISTA GREY

SLATE

सवा mm



Solid. Strong. Superior.

सवा mm



9766 A-200  
SAND GLACIOR



9767 A-200  
GOLDEN GLACIOR

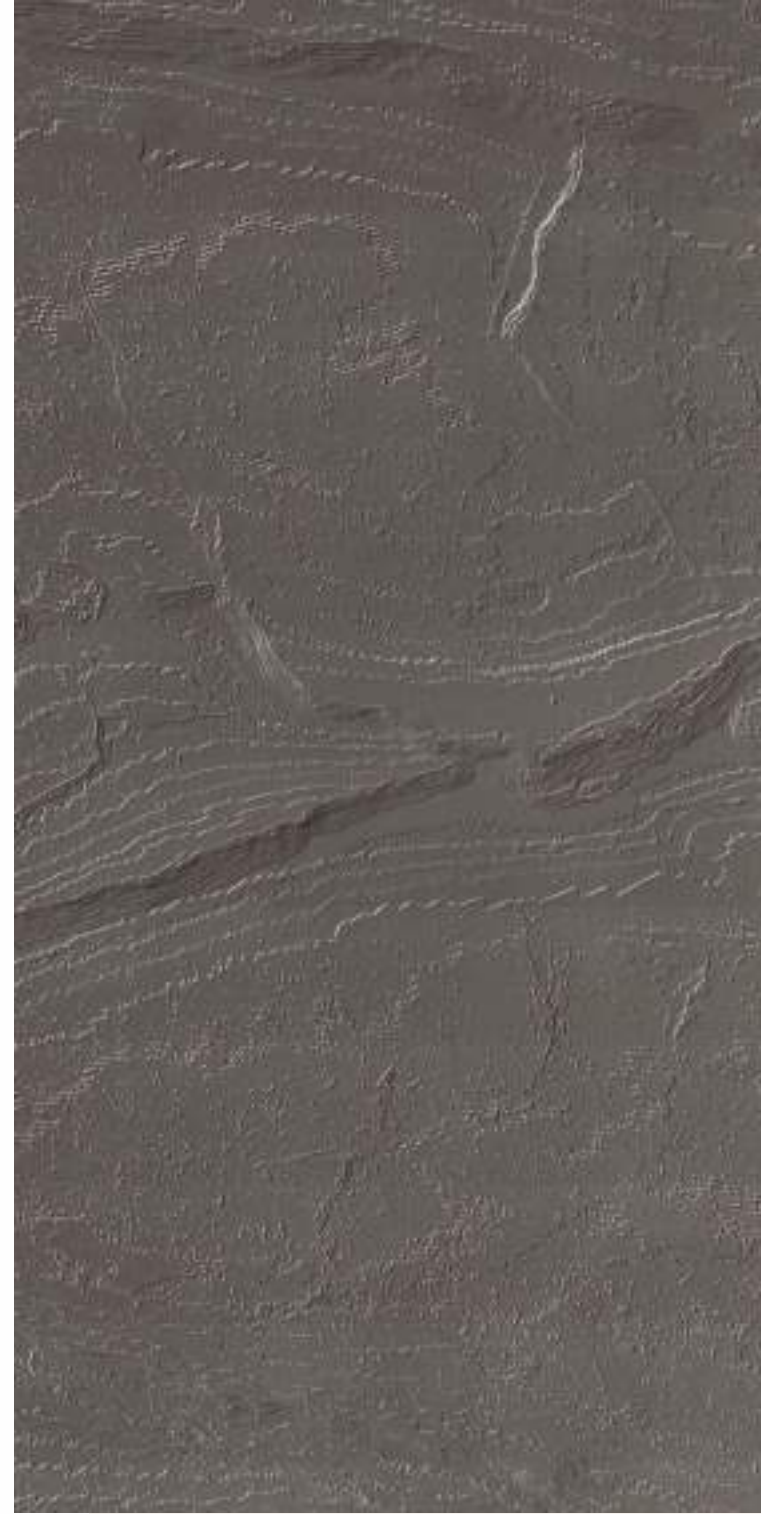
# SLATE

1.25 MM

सवा mm



4702 A-200  
BEIGE MIST



4154 A-200  
PEBBLE GREY



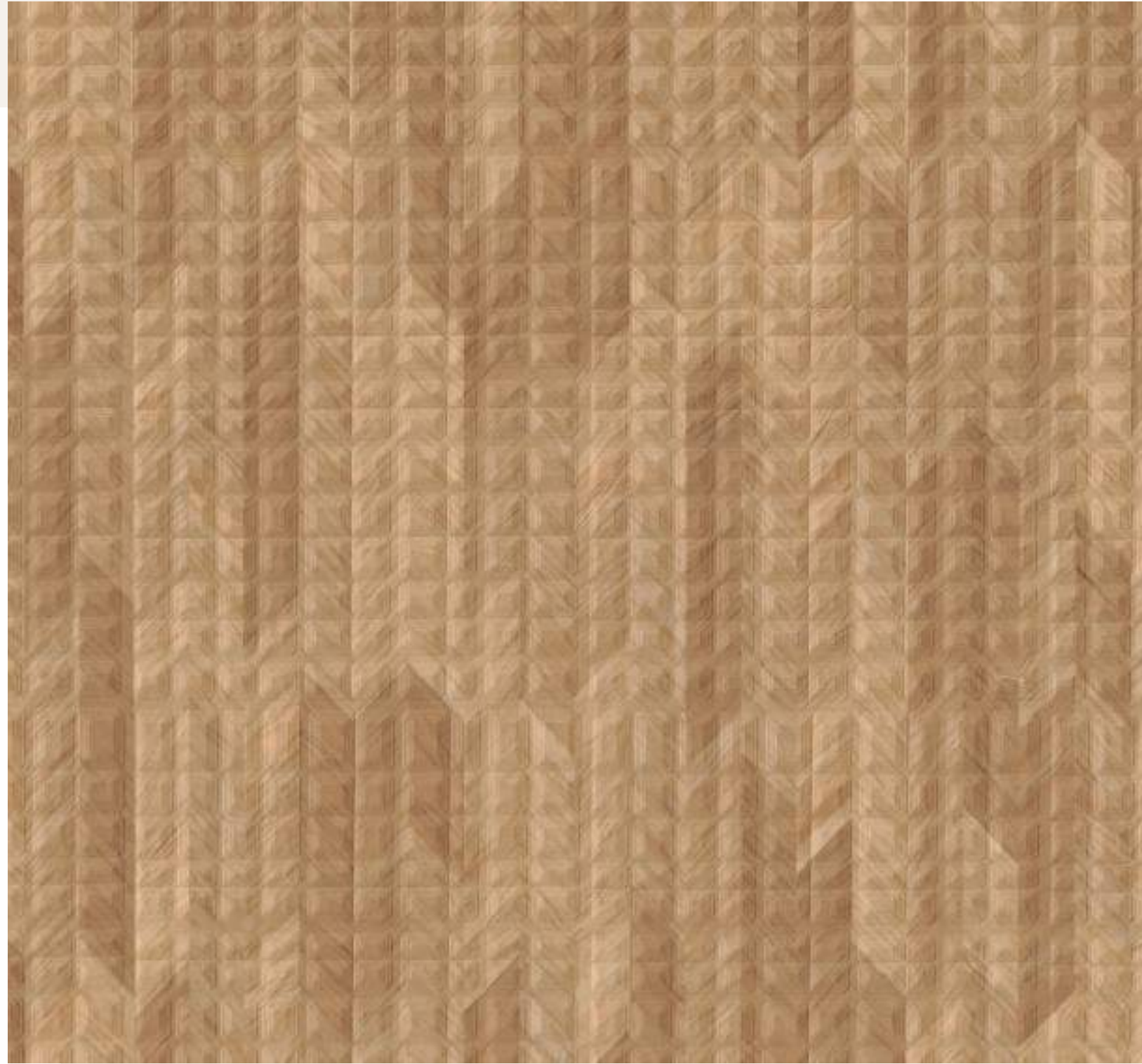
1480 A-200  
CONCRETE



9701 A-200  
MIDNIGHT

# BOXES

1.25 MM



1544 A-206  
WOODEN MOSAIC

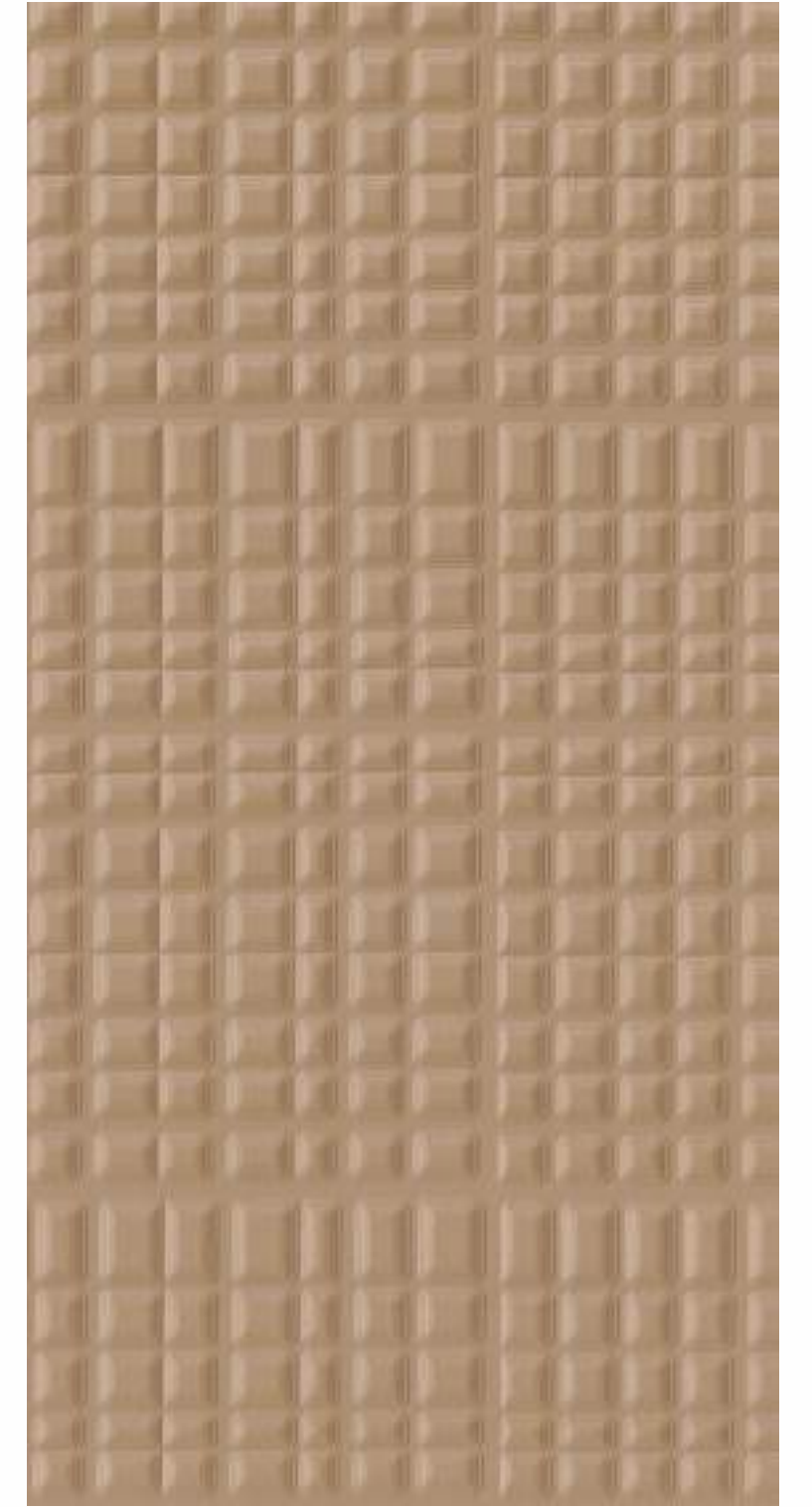


1544 A-206

4142 A-206

Bold. Balanced. Beautiful.

सवा mm

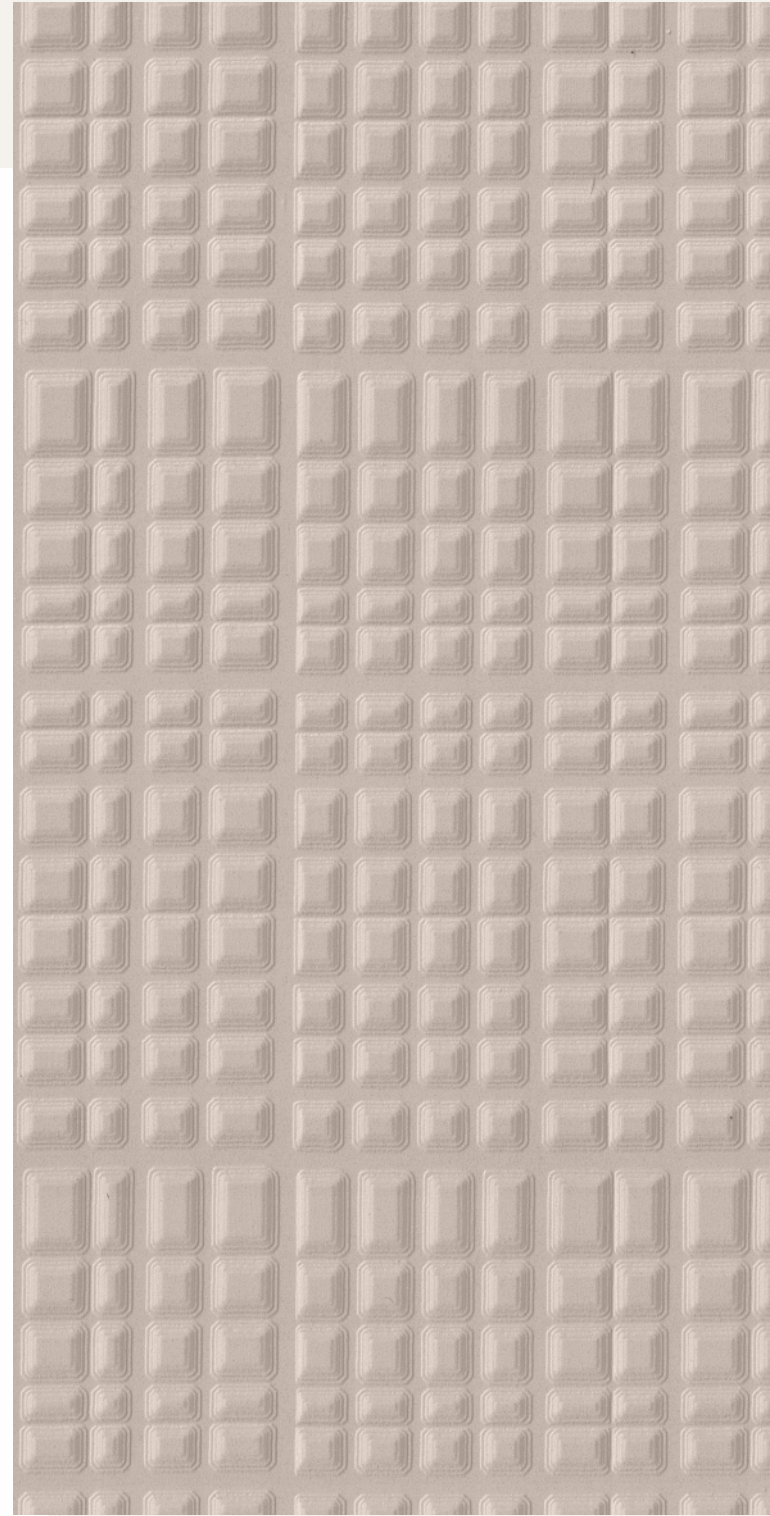


4142 A-206  
CAPPUCCINO

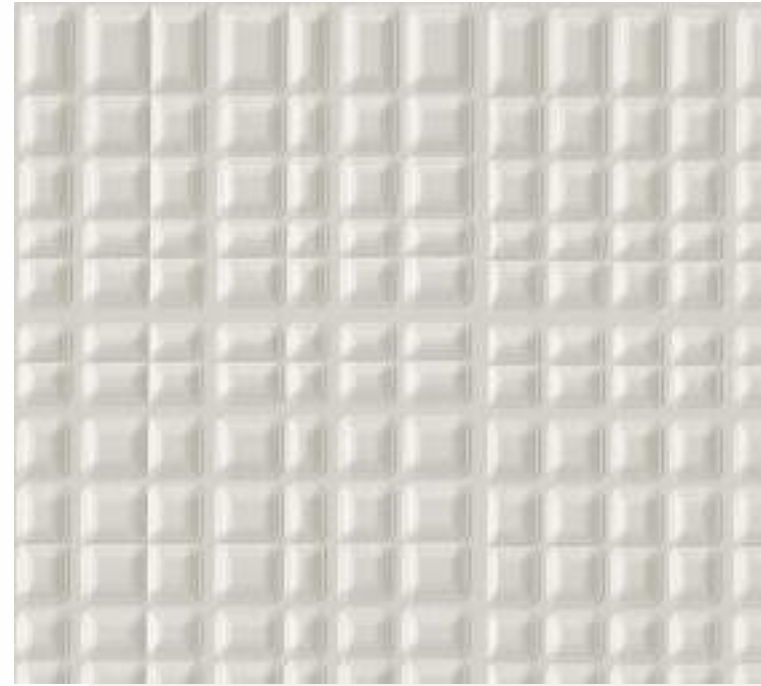
# BOXES

सवा mm

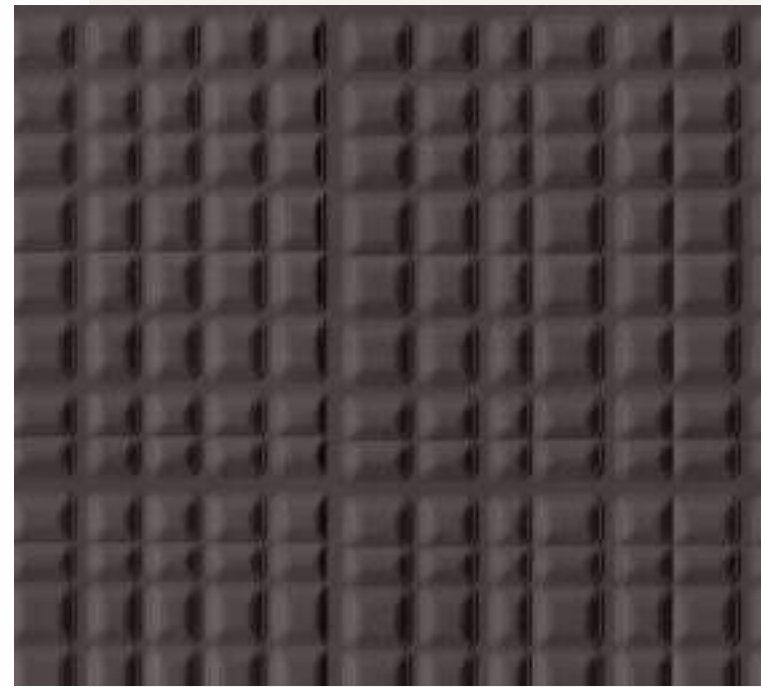
1.25 MM



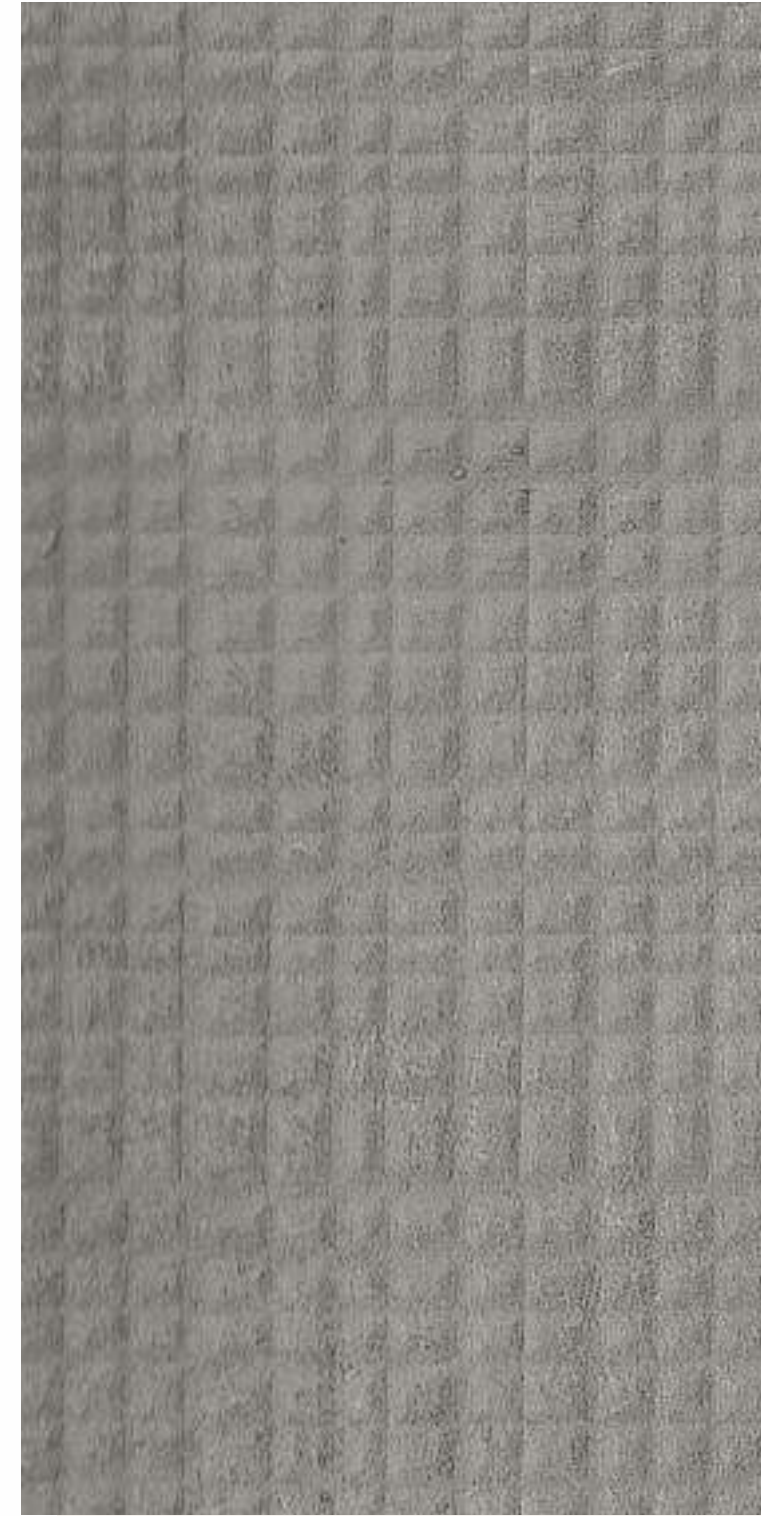
4735 A-206  
BEIGE LATTE



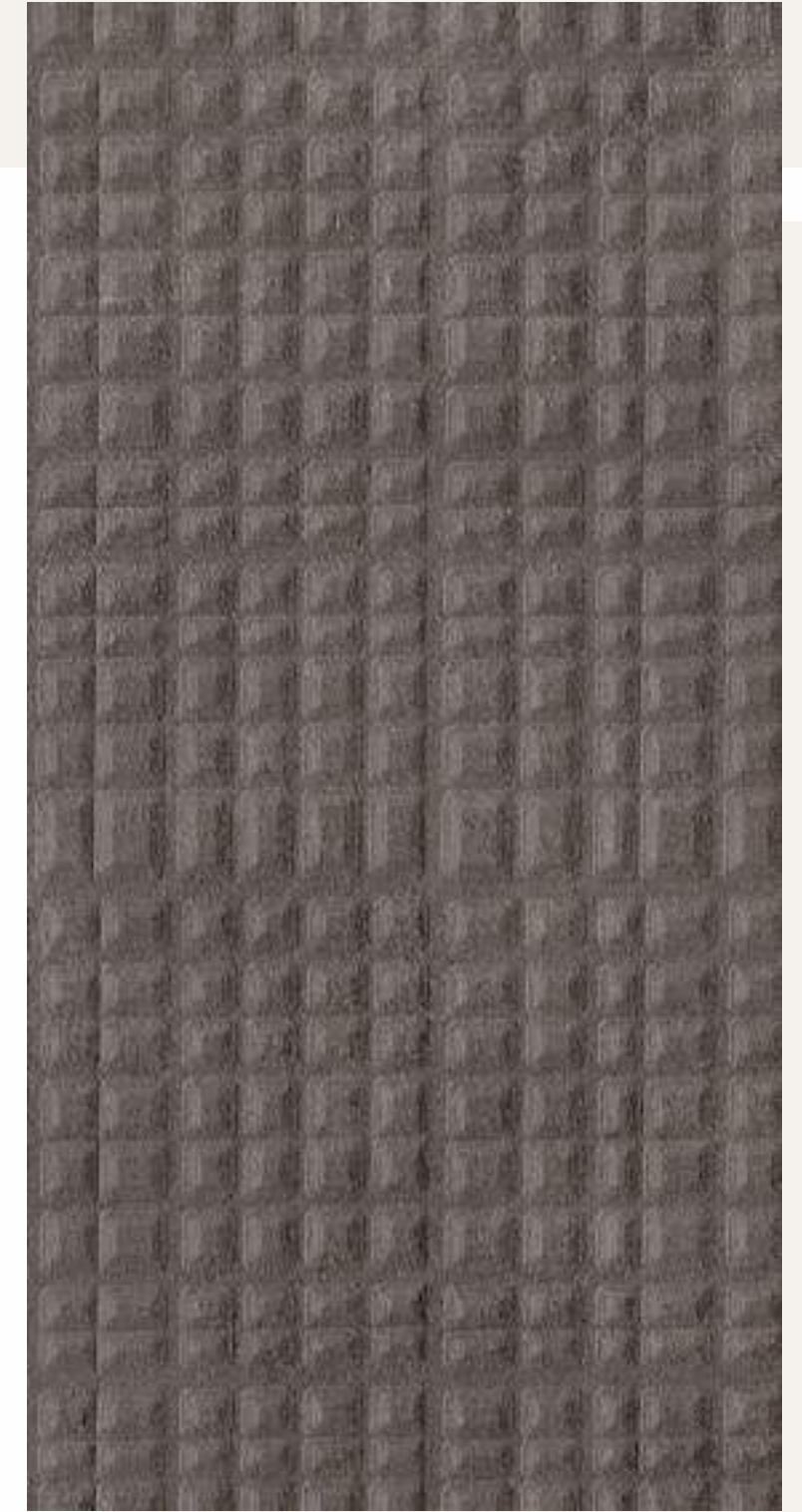
BR 4003 | A-206  
WARM WHITE



4137 A-206  
CHARCOAL GREY



1480 A-206  
CONCRETE

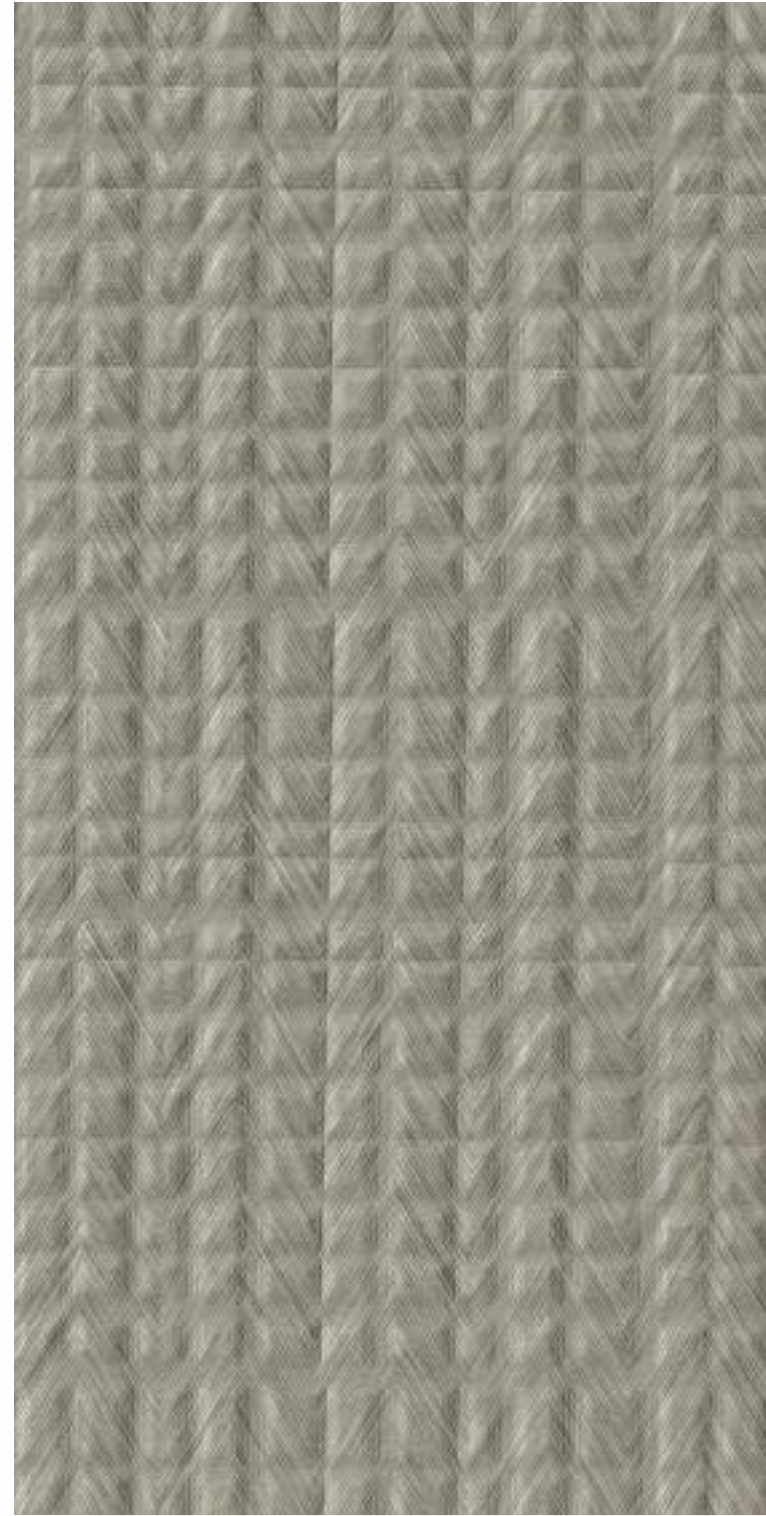


1481 A-206  
AGED CONCRETE

# BOXES

सवा mm

1.25 MM



1527 A-206  
CHEVRON TEAK NATURAL



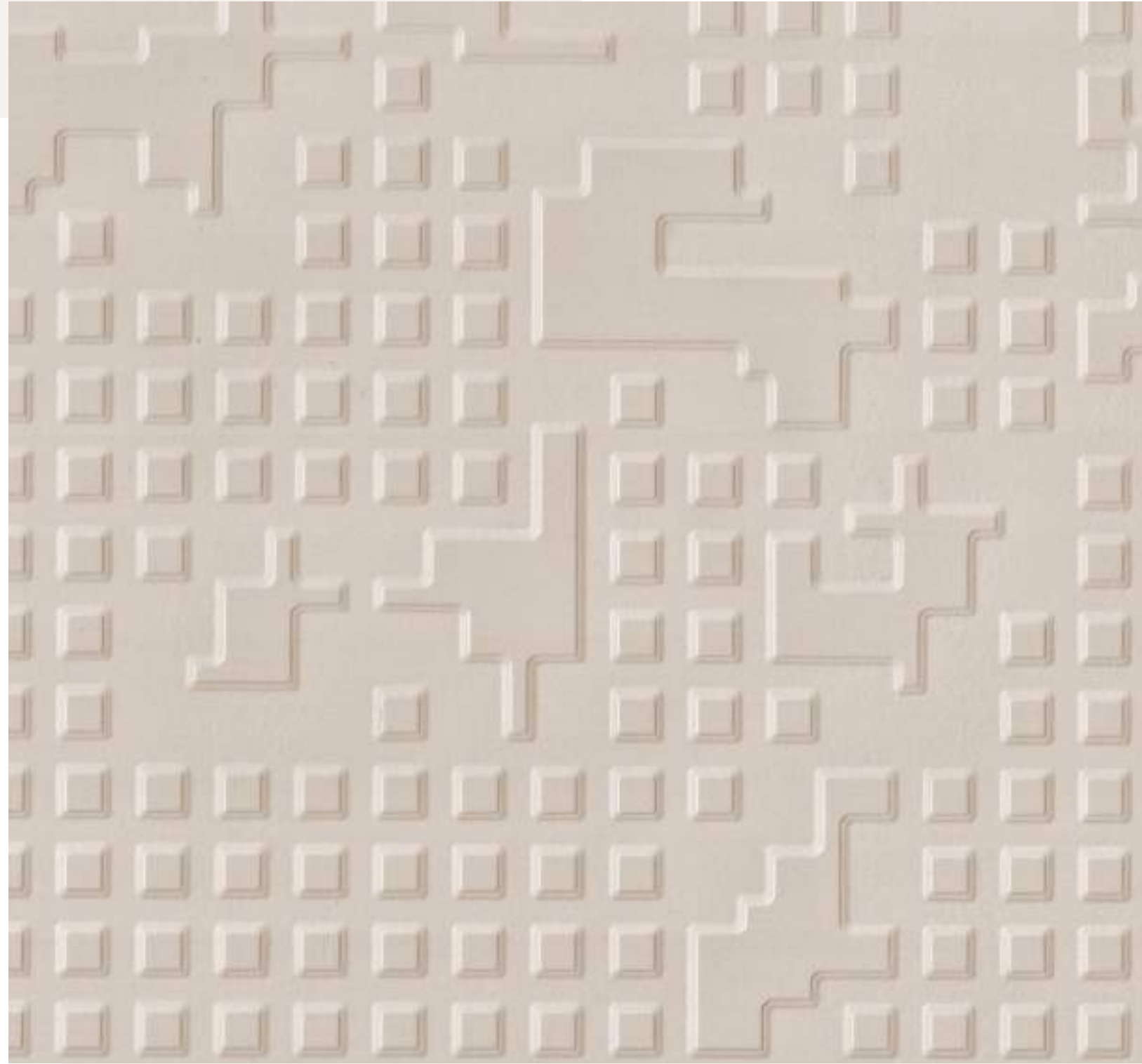
1526 A-206  
CHEVRON TEAK GREY

Feel the Forest. Live the Strength.

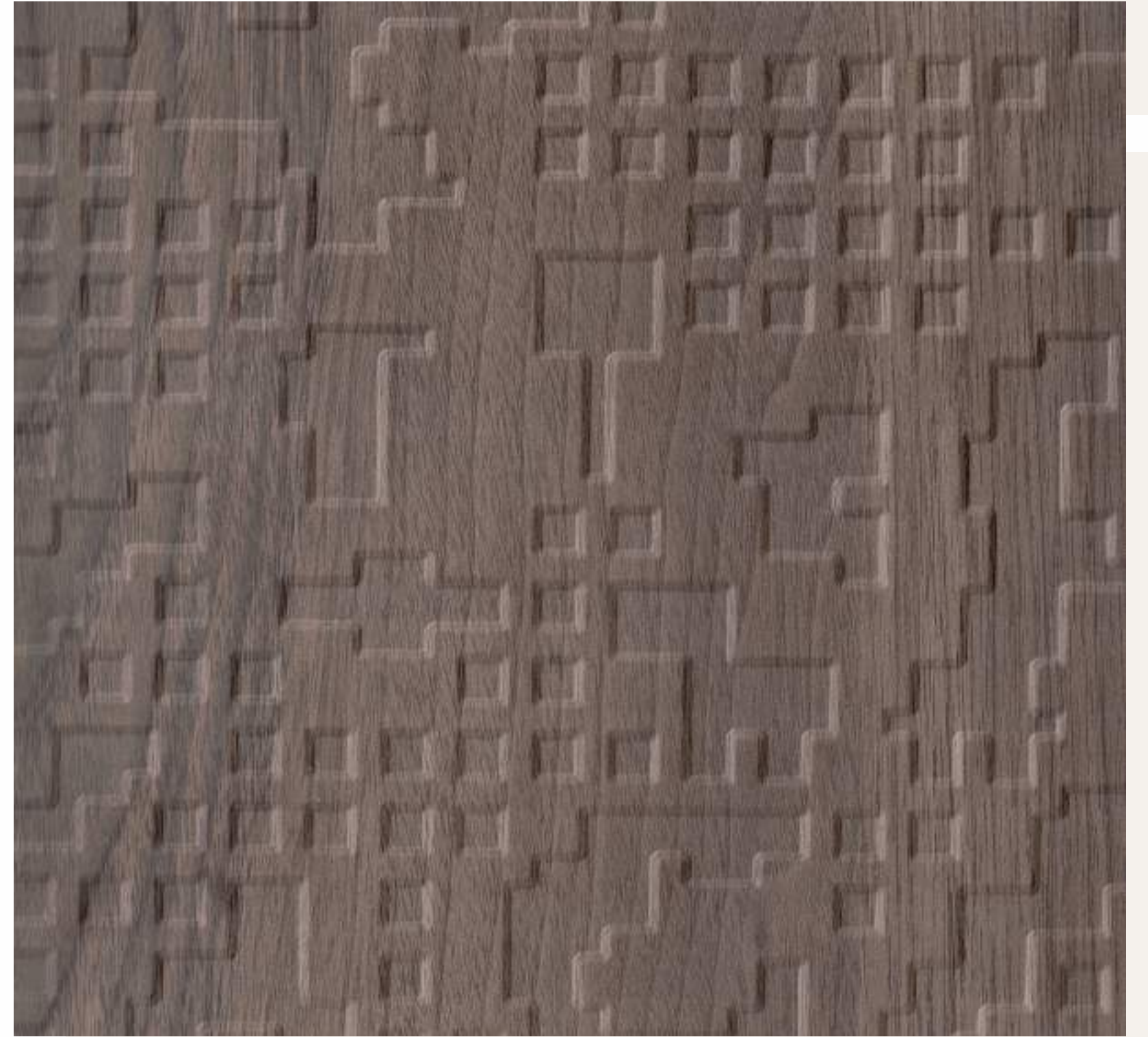
PIXEL

1.25 MM

सवा mm



4702 A-207  
BEIGE MIST



8098 A-207  
SMOKED BROSSE PECAN



Feel the Forest. Live the Strength.



1528 A-207  
TITTER WALNUT



1471 A-207  
CHOCO CRUX

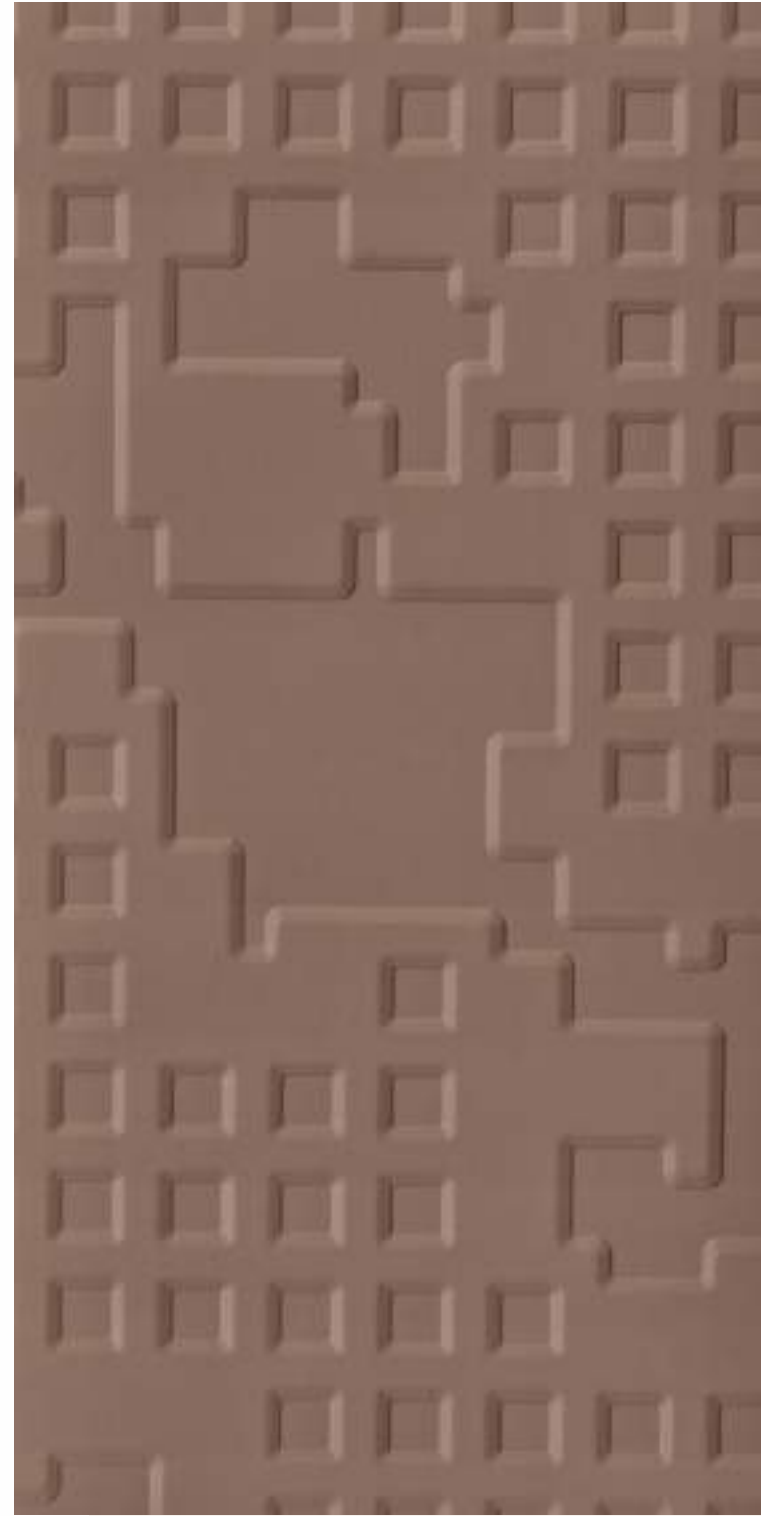
# PIXEL

सवा mm

1.25 MM



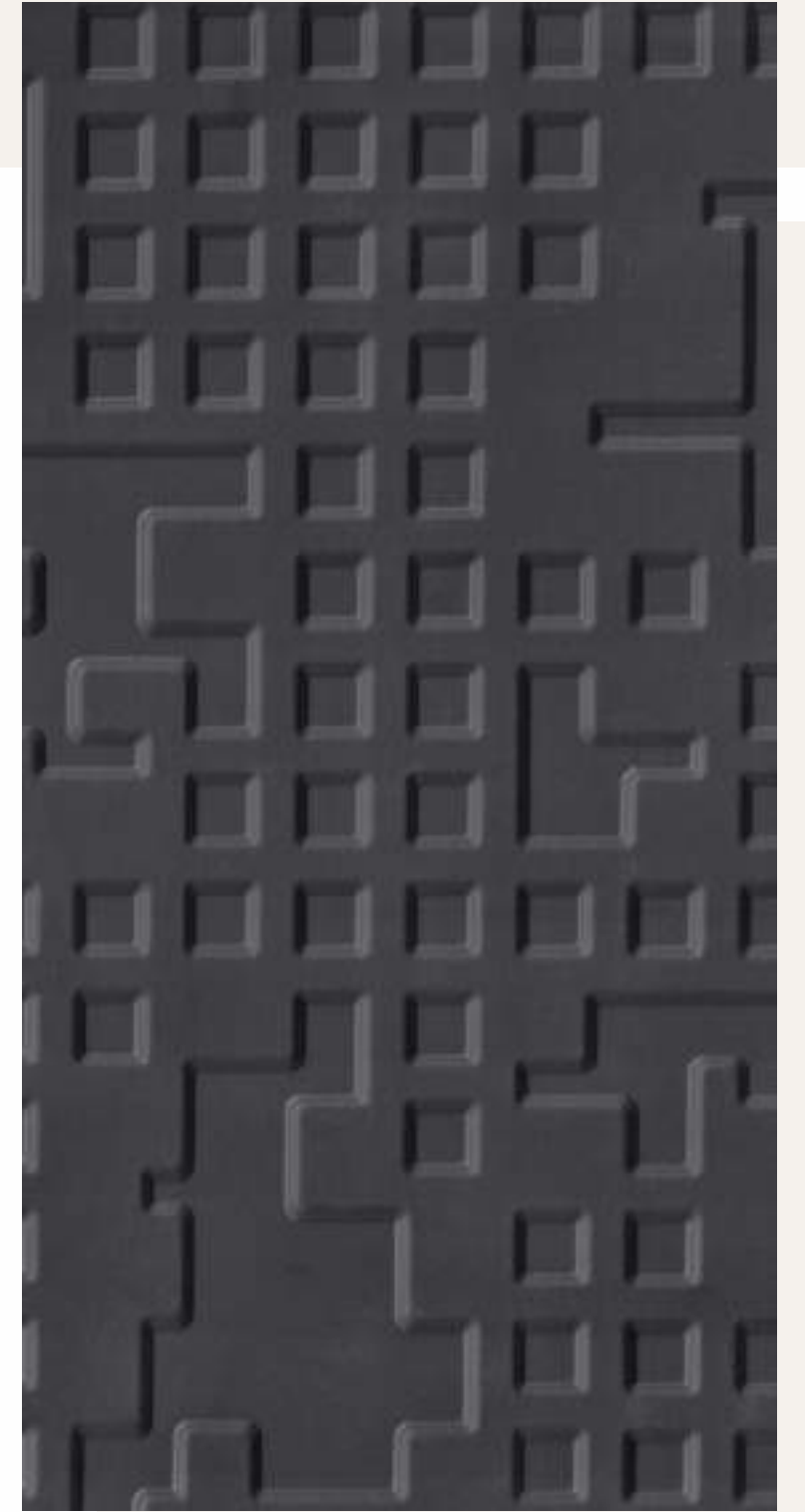
1529 A-207  
DENSEN FALL OAK



8090 A-207  
NUTMEG

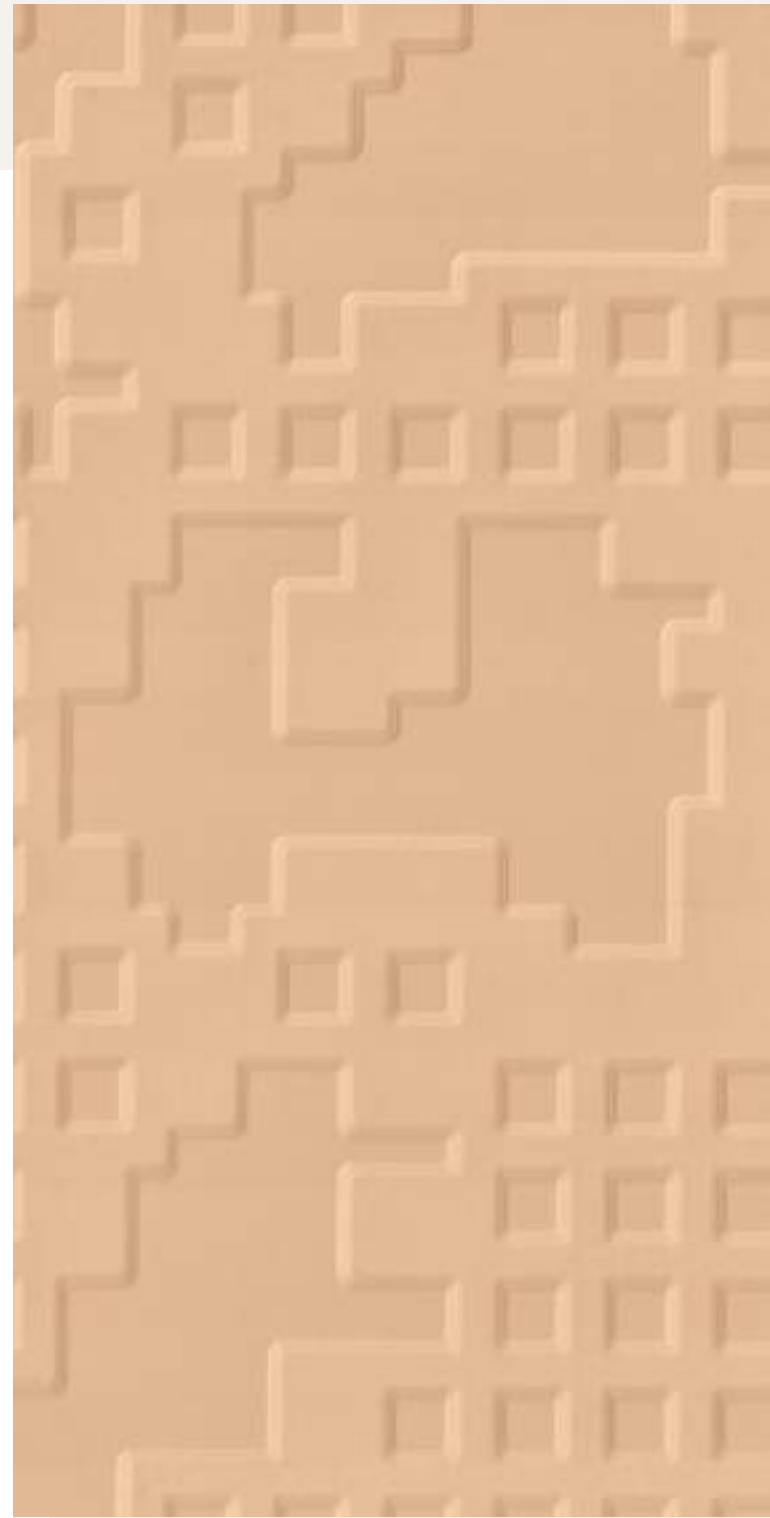


5255 A-207  
AMERICAN FRESCO



4163 A-207  
COAL BLACK

# PIXEL



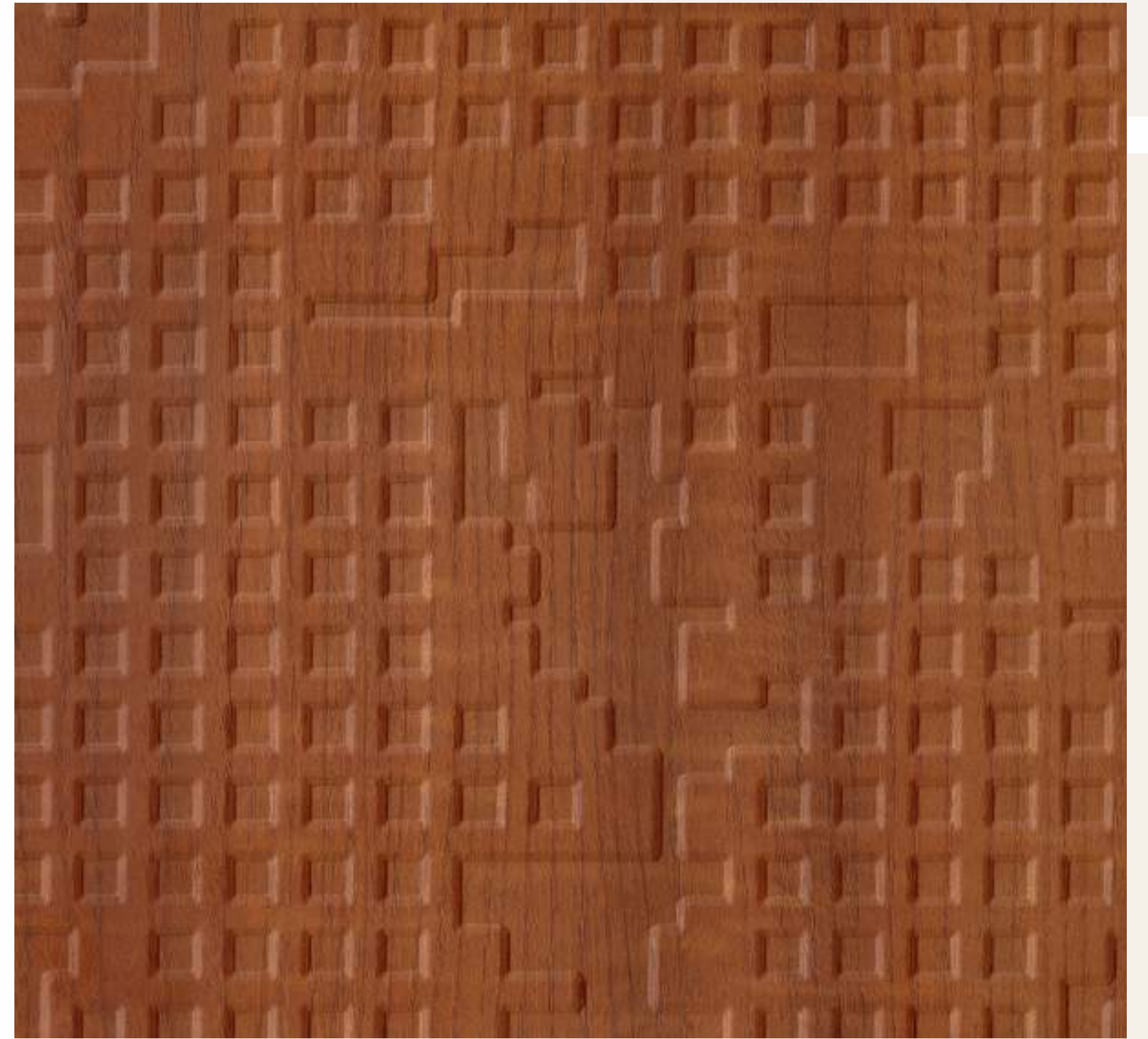
4151 A-207  
BEIGE



Minimal. Modern. Magical.

सवा mm

1.25 MM



1531 A-207  
METALLIC WOOD

Feel the Forest. Live the Strength.

# WEAVE

# सवा mm

# 1.25 MM

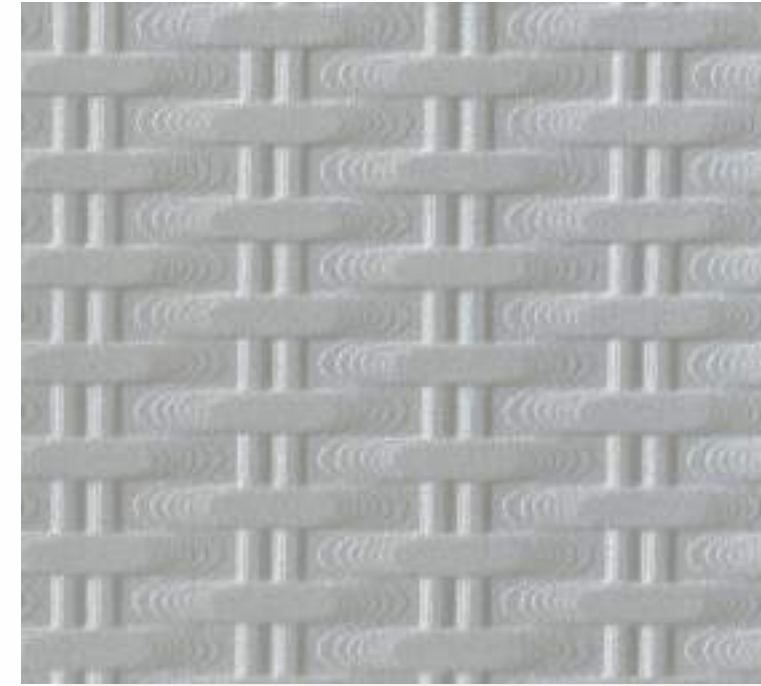
# WEAVE



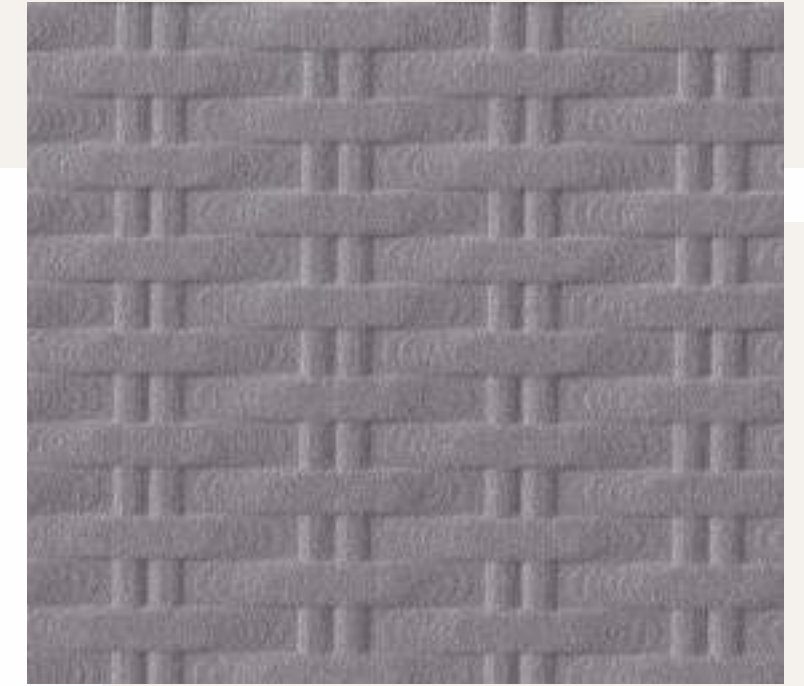
BR 4003 A-211  
WARM WHITE



8062 A-211  
ALMOND GLITTER



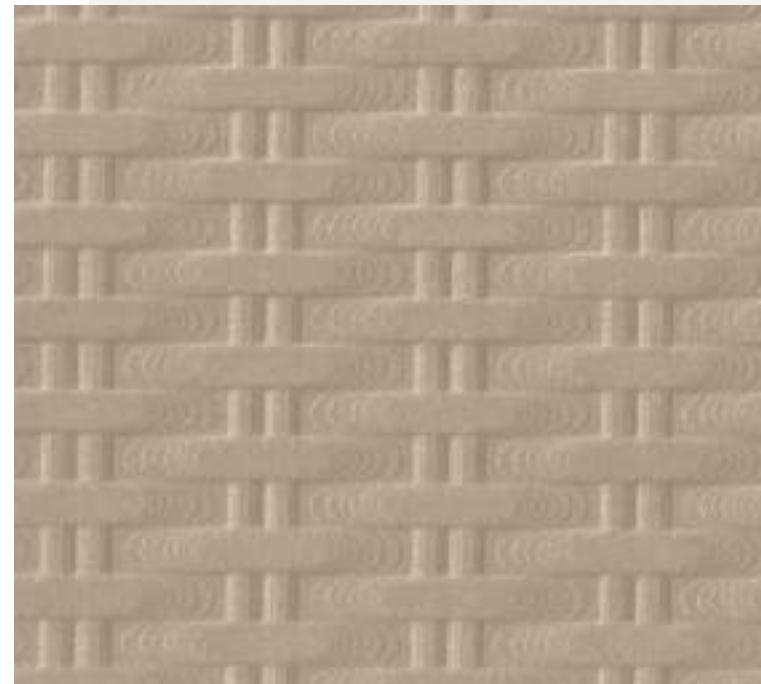
2131 A-211  
SILVER SPARKLE



9396 A-211  
GLOSSY GREY



4702 A-211  
BEIGE MIST



10009 A-211  
MISTY SPARKLE



2132 A-211  
SAGE SPARKLE



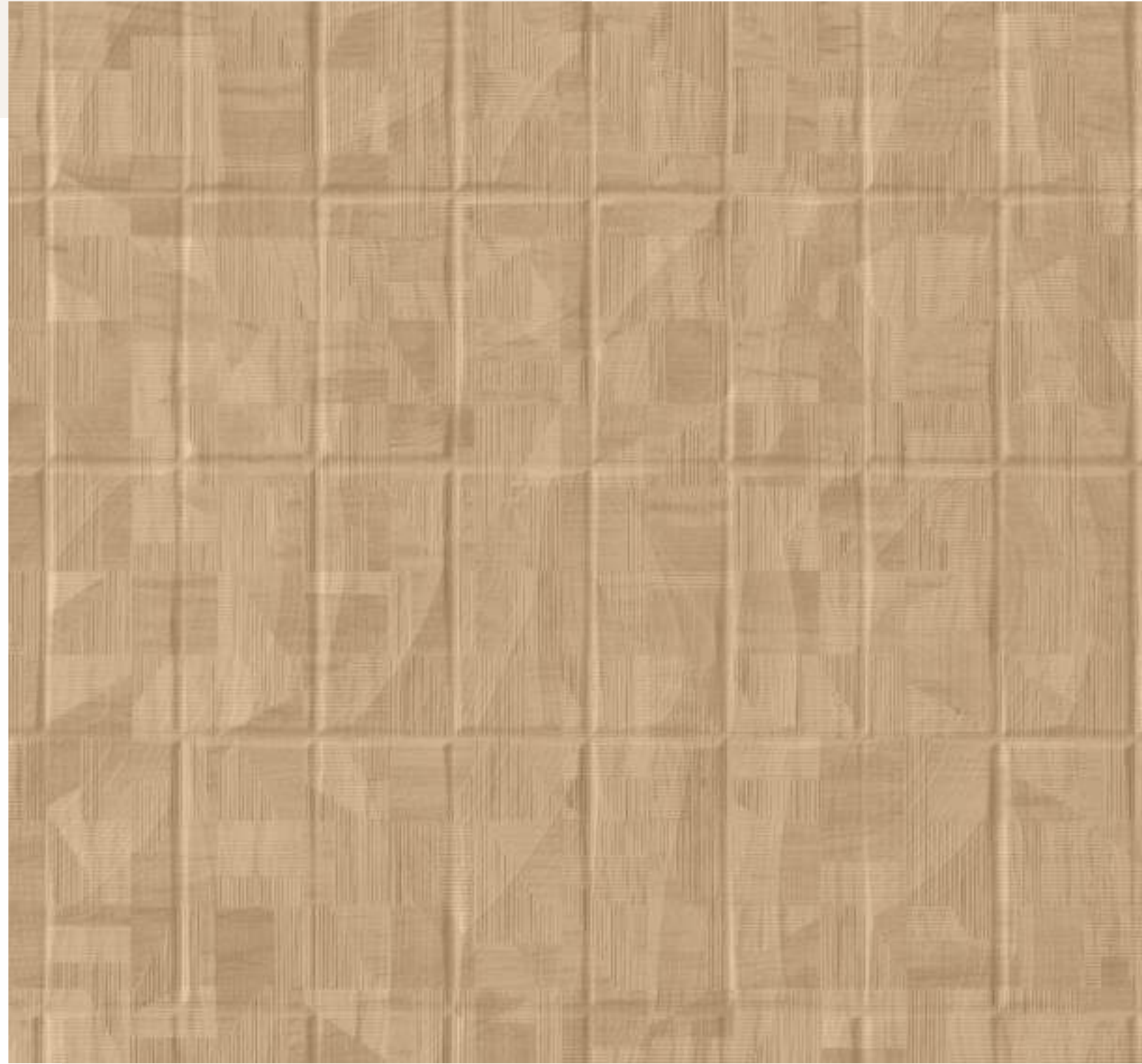
8120 A-211  
GOLD SHIMMER

MOSAIC

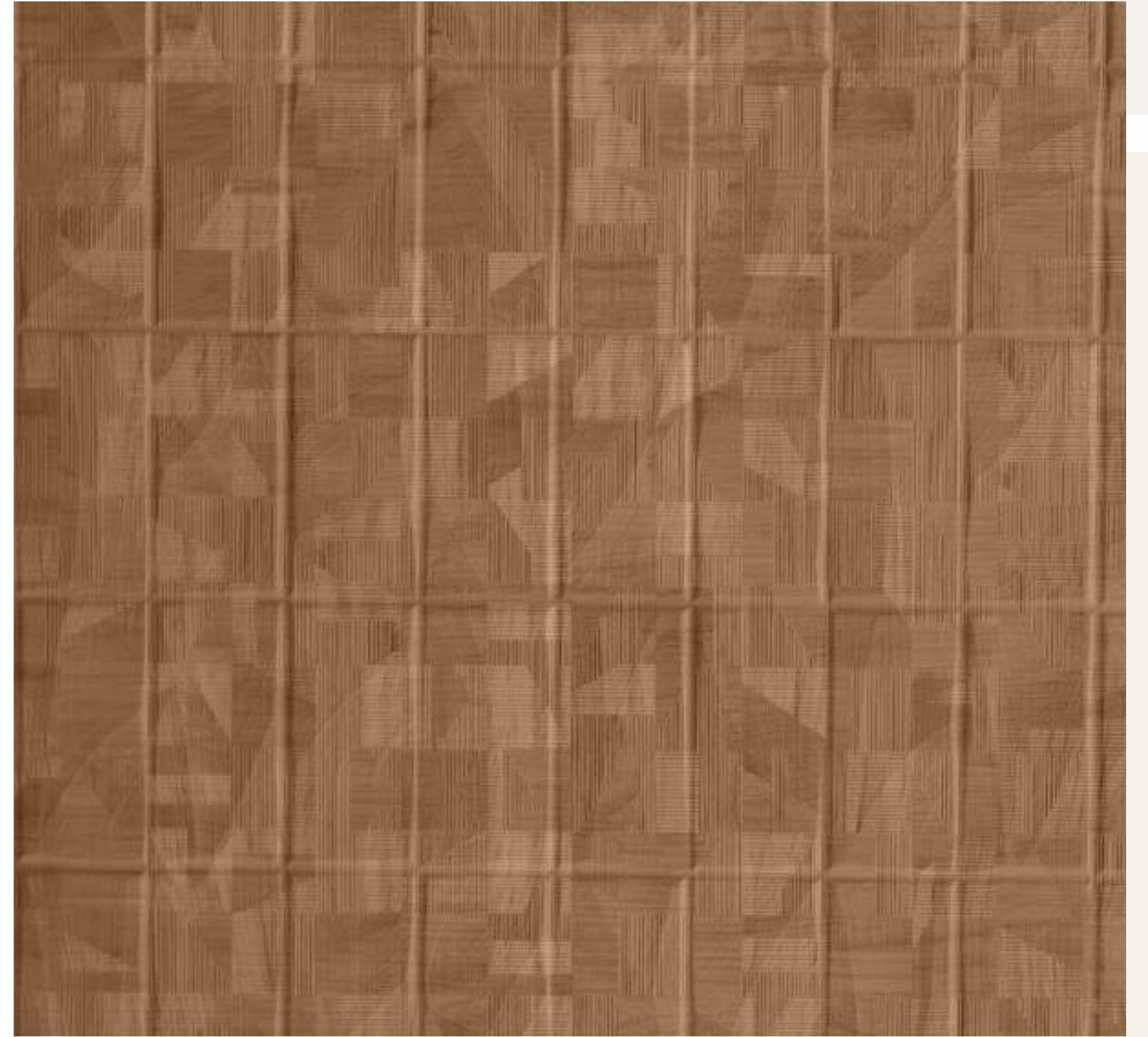
ସରା mm

1.25 MM

MOSAIC



8125 A-214  
WOODY MOSAIC LIGHT



8128 A-214  
WOODY MOSAIC DARK

MOSAIC

1.25 MM



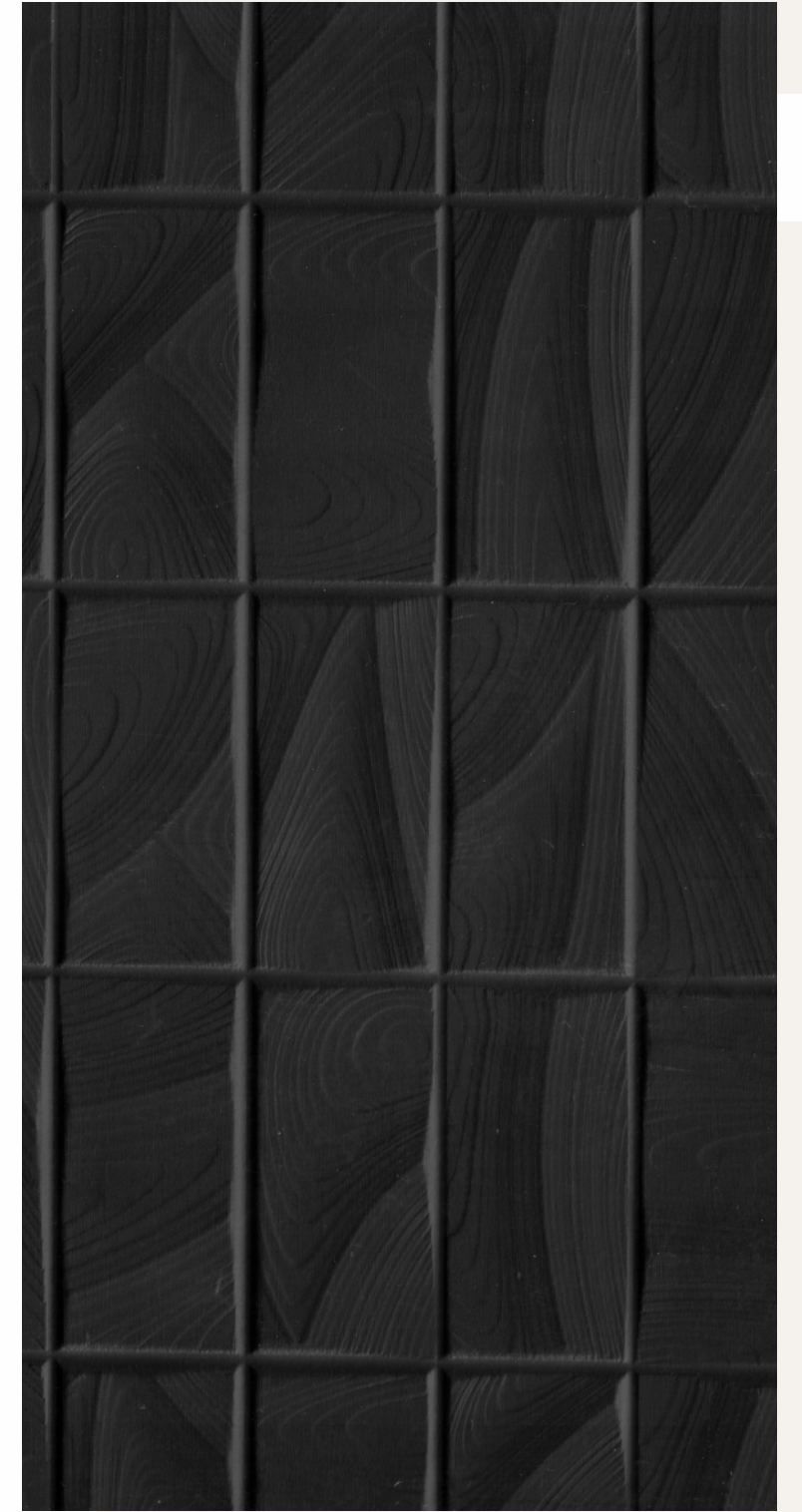
4702 A-214  
BEIGE MIST

सवा mm



8090 A-214  
NUTMEG

MOSAIC



4051 A-214  
BLACK

RUSTIC

1.25 MM

सवा mm

RUSTIC



9368 A-215  
COMPANIA OAK



1471 A-215  
CHOCO CRUX



1482 A-215  
MAJESTIC WOOD

- INDEX -

SR. NO.		DESIGN NO.	FINISH NO.	PAGE NO.
1		1471	A-207	20
2		1471	A-215	32
3		1480	A-200	10
4		1480	A-206	14
5		1481	A-206	14
6		1482	A-215	32
7		1526	A-206	15
8		1527	A-206	15
9		1528	A-207	20
10		1529	A-207	21
11		1531	A-207	24
12		1544	A-206	11
13		2131	A-211	26
14		2132	A-211	26
15	BR	4003	A-206	13
16	BR	4003	A-211	25
17		4051	A-190	02
18		4051	A-214	30
19		4137	A-206	13
20		4142	A-206	12
21		4145	A-200	06
22		4151	A-207	23
23		4154	A-200	09
24		4163	A-190	02
25		4163	A-207	22
26		4702	A-190	01

SR. NO.		DESIGN NO.	FINISH NO.	PAGE NO.
27		4702	A-200	09
28		4702	A-207	17
29		4702	A-211	25
30		4702	A-214	29
31		4735	A-206	13
32		5255	A-207	22
33		8062	A-211	25
34		8090	A-200	06
35		8090	A-207	21
36		8090	A-214	30
37		8098	A-207	18
38		8114	A-200	05
39		8120	A-211	26
40		8125	A-214	27
41		8128	A-214	28
42		9323	A-190	04
43		9325	A-190	03
44	BR	9368	A-215	31
45		9396	A-211	26
46		9701	A-200	10
47		9766	A-200	07
48		9767	A-200	08
49		10009	A-211	25



Scan this QR code to download PDF on your device.

- TECHNICAL & SPECIFICATIONS -



PHYSICAL PROPERTIES	REQUIREMENT	TYPICAL VALUE	RESULT
Thickness	1.25 MM	1.25 MM	YES
Thickness Tolerance	+/-0.1	+/-0.1	YES
Squireness	0-6 MM	0-6MM	YES
Edge Squireness	1.5mm/Meter	1.0mm/Meter	YES
Flatness	+ -120mm	+ -60mm	YES
Light Resistance	Slight Effect	Slight Effect	YES
<b>RESISTANCE TO STAINING</b>			
Cleanability	Sum Of Score [20 Max]	16	YES
Stain [1-10]	No Effect	No Effect	YES
Stain [1-15]	Moderate Effect	Slight Effect	YES
Boiling Water Resistance	No Effect	No Effect	YES
High Temp Resistance	Slight Effect	Slight Effect	YES
Liner Glass Scratch Resistance	<20/50/100/200	<200	YES
Ball Impact Resistance	500mm	550mm	YES
Dart Impact Resistance	200mm	200mm	YES
Radiant Heat Res [Coil]	80 Sec	80 Sec	YES
Dimensional Change [Machine Direction]	0.70%[Max]	0.6%[Max]	YES
Dimensional Change [Cross Direction]	1.20%[Max]	1.00%[Max]	YES
<b>ROOM TEMPERATURE</b>			
Dimensional Stability [Machine Direction]	0.60%[Max]	0.5%[Max]	YES
Dimensional Stability [Cross Direction]	1.10%[Max]	0.95%[Max]	YES
Wear Resistance	400 Cycles [Min]	>400 Cycles [Min]	YES

SIZE : 1220 mm x 2440 mm [4' X 8'], 1220 mm x 3050 mm [4' x 10'] in selected texture.

GRADES & THICKNESS : 1.25mm.

SURFACE RESISTANCE TO : Artificial Perspiration, Citric Acid Solution, Coffee, Cooking Fat, Gasoline, ink, Rectified Spirit, Kerosene, Milk, Sodium Hydroxide Solution, Tea, Wax Crayon

WARRANTY : Brown Paper warrants that its products are free from manufacturing defects and they are fit and suitable for usual purpose. The product must be inspected prior to installation and our liability will be limited to the cost of product only.



Indian Green Building Council Membership

The Indian Green Building Council (IGBC), part of the Confederation of Indian Industry (CII) was formed in the year 2001. The vision of the council is, "To enable a sustainably built environment for all and facilitate India to be one of the global leaders in the sustainably built environment by 2025"



ISO 9001:2015 is an international standard related to quality management system, applicable to any organization from all types of business sectors and activities. ISO 9001:2015 is based on eight management principles (all fundamental to good business practice). When fully adopted, these principles can help improve your organizational performance.



BIS is the National Standard Body of India established under the BIS Act 1986 for the harmonious development of the activities of standardization, marking and quality certification of goods and for matters connected therewith or incidental thereto. BIS has been providing traceability and tangibility benefits to the national economy in a number of ways - providing safe reliable quality goods; minimizing health hazards to consumers; promoting exports and imports substitute; control over proliferation of varieties etc. through standardization, certification and testing.



The UL GREENGUARD Certification Program requires that products undergo independent, scientific testing and ongoing monitoring of their chemical emissions.[1] Only products that meet UL Environment's stringent emissions standards qualify for certification. These standards are based on established criteria from key public health agencies.



Offices



Restaurant



Keep out of strong sunlight



Kitchen Countertops



Wall Cladding Wall Paneling



Crafted for interior use only



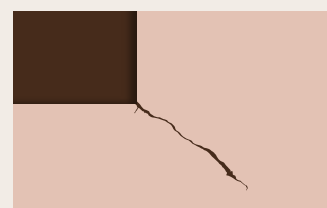
Furniture Makeover



Countertops and Work Surfaces



Carpenter friendly easy to use



NO CLAIMS WILL BE CONSIDERED for cracking resulting from groove cutting for L-shaped designs



NO CLAIMS WILL BE CONSIDERED related to air bubbles